

CRAFTING THE MAGIC OF NURSERY RHYMES

# GLAMORGAN FEDERATION WI SHOW

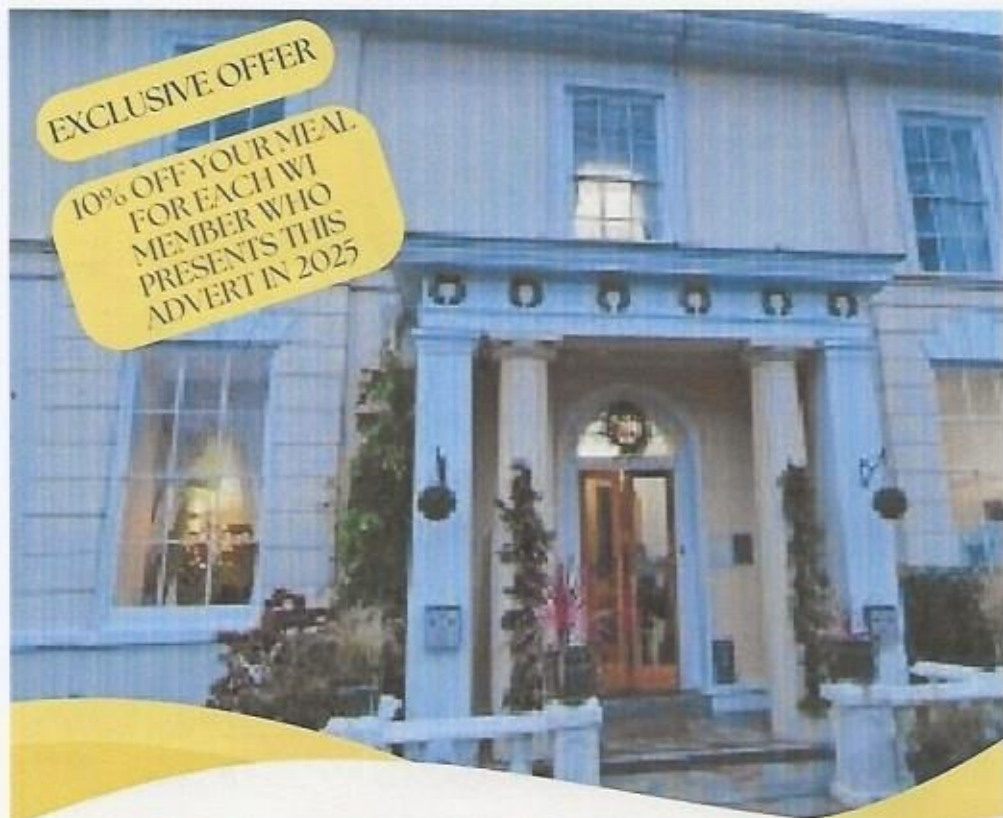
SATURDAY 5TH JULY 2025  
ABERAVON BEACH HOTEL  
PORT TALBOT  
SA12 6QP  
10:00AM TO 4:00PM



theWI  
INSPIRING WOMEN

EXCLUSIVE OFFER

10% OFF YOUR MEAL  
FOR EACH W/ MEMBER WHO  
PRESENTS THIS  
ADVERT IN 2025



# NORTON HOUSE HOTEL

## THE MANSION HOUSE BY THE SEA

● BISTRO ● WEDDINGS ● FUNCTIONS

ENJOY A BREAK, WEDDING OR DINING EXPERIENCE LIKE  
NO OTHER.

IDEAL FOR WEDDINGS, BIRTHDAYS, CHRISTENINGS,  
FUNERALS, CONFERENCES, EVENTS, LUNCH & DINNER IN  
THIS PICTURESQUE VILLAGE BY THE SEA

CONTACT US ☎ 01792 404891 ✉ [enquiries@nortonhousehotel.co.uk](mailto:enquiries@nortonhousehotel.co.uk)  
[functions@nortonhousehotel.co.uk](mailto:functions@nortonhousehotel.co.uk)

NORTON HOUSE HOTEL  
NORTON ROAD, MUMBLES SWANSEA SA3 5TQ



## **Welcome to the 2025 Glamorgan W.I. Show**

**Another year and another Show! We hope you like the theme again this year. We have had great fun reminiscing our childhoods and the many different Nursery Rhymes we can remember.**

**Last year was a great success and we trust you will all enter as many classes as possible again this year.**

**Thank you to everyone who did enter a class or classes especially the Cooperative. I am really looking forward to seeing all the different Nursery Rhymes and your interpretations of them, as well as all the other classes.**

**Our thanks to all our business sponsors - please do support them as we could not put on this amazing Show without them. Also, to all the WIs who have sponsored a class. Each year our costs increase, so every little helps.**

**Thank you to all our judges, many who give of their time for free, we are very grateful.**

**Finally thank you to all the stewards who do a sterling job, fetching, carrying, setting up and taking down at the end.**

**With 3,500 members we can make this year's Show even bigger and even more of a wonderful showcase for Glamorgan Federation.**

**Good Luck**

**Myra, Diane, Gaynor, Wendy, Marylyn, Helen  
Show Sub Committee**



## Class 4 — Hot Cross Buns

### **INGREDIENTS:**

- 225ml whole milk
- 500g strong white bread flour
- 65g caster sugar
- 8g dried active yeast/fast action yeast
- 1/2 tsp salt
- 1 teaspoon ground cinnamon
- 1/2 tsp ginger
- 1/2 tsp nutmeg
- Zest of 1 orange
- 50g unsalted butter
- 200g sultanas or raisins
- 2 medium eggs

### **Topping:**

- 30g flour
- 30ml water
- 1 tablespoons apricot



### **METHOD:**

1. Warm your milk in a pan until it's just steaming (tepid).
2. In a bowl, add your flour, salt, cinnamon, ginger, nutmeg, sugar, yeast and orange zest - add in your butter and rub between your fingers so the mixture resembles breadcrumbs.
3. To the bowl, add your warmed milk, and the eggs and sultanas or raisins and mix it all together.
4. Knead for 5-10 minutes until the mixture is smooth, elastic and springy to touch.
5. Transfer to a clean but lightly oiled bowl, and cover the bowl with cling film, Leave to rise until doubled in size - usually takes 1-2 hours.
6. Once risen, remove from the bowl and knead lightly on a floured surface to "knock it back".
7. Split evenly into 12 balls (Mine weighed 98g each) and add on to a lined tray with about a centimetre gap between the balls.
8. Cover with lightly oiled cling film, and leave to rise whilst your oven preheats to 200C/180C fan. I usually leave them for 45-60 minutes!
9. Once at the temperature - whisk together the flour and water, and carefully pipe on to form the crosses.
10. Bake in the oven for 20 minutes at 200C/180C Fan!
11. Once baked - brush lightly with apricot jam if you like them sticky and shiny and then leave to cool fully.



# Show Awards

## Swansea Salver

For the WI with over 40 Members – Most points gained for prizes won

## Bridgend Salver

For the WI with between 25 and 40 Members – Most points gained for prizes won

## Cornelly Cup

For the WI with under 25 Members – Most points gained for prizes won

**Doris Richards Cup** – for Best Craft in Show

**Llanblethian Cup** – for Best Floral Art in Show

**Port Talbot Cup** – for Best Cooperative in Show

**Swansea Cup** – for Best Cookery in Show

**Kenfig Cup** – for Best Literature in Show

**Dilys Price Award** – for Best Sugar-craft or Cold Porcelain in Show

**Upper Killay WI Award** – Best Artwork in Show

**Angela Bending Award** – For Show Chairman's Choice

A prize will awarded for the Men's Class.

### Individual Classes

5 points for 1st Prize

4 points for 2nd Prize

3 points for 3rd Prize

1 point for Highly Commended

### Cooperative

8 points for 1st Prize

6 points for 2nd Prize

4 points for 3rd Prize

2 points for Highly Commended

# Rules for Show Entries

All Classes are open to Members of GFWI only except Class 24.

Class 24 is a Men's/Partner's Class (related to a WI Member) and a separate prize will be awarded.

Class 1 (Story) and Class 2 (Poem) must be received by the closing date Friday 6th June either via email or post

There are no Children's Classes this year due to very low entry numbers.

There is a limit of ONE entry per Member per Class and ONE Cooperative entry per Class per WI.

Entries should not have been previously exhibited in a WI show and must be made within the last 2 years.



Garments should not have been worn.

Cooperative entries must be the work of at least 2 Members with maximum of 2 members to stage the exhibit.

Clear jars, free of proprietary markings should be used for all preserves, with new appropriate lids.

Judging will be in accordance with the latest editions of "On with the Show". This WI Handbook can be viewed and downloaded:

<https://mywi.thewi.org.uk/interests/shows-and-competitions/on-with-the-show>.

The Judge's decision is final.

The Show Committee holds no financial responsibility for damage or loss of exhibits and cannot guarantee the edibility of food items after the Show and please avoid use of valuable accessories.

All items are to be collected by WIs at the end of the Show. Non food entries left at the Show venue will be stored at Federation Office for one month only then given to charity.



## How to Enter

Our WI Members are incredibly talented and every single entry is important - without your entries there would be no Show! So please have a go at entering!

- Give your entry form to your WI Secretary who will collate all the entries for your WI Group. Keep a copy of your entry form.
- All entry forms should be returned as soon as possible but no later than **Friday 6th June 2025** Please **NO** late entries.
- Enter by email (preferred) to **helen.denniswi@outlook.com** or by post to Mrs Helen Dennis Entry Secretary C/o Federation House, 13 Courtland Place, Port Talbot SA13 1JJ.
- WI Secretaries should keep a list of all their entries and all entries will be acknowledged to the WI Secretary.
- Your WI Secretary will be sent your Entry Number label & your Entry List. If you can't stick the label to your entry please ask for a tie-on tag (these will also be sent to your WI Secretary).
- Entries should be brought to the Show venue for staging between **10am-11.30am on Friday 4th July**.
- Entries for Class 19 Semi-Imposed Floral Class to be arranged in situ at the Show by member on Friday 4th July 9.30am to 10.30am. (If you are entering, as we are funding this Class it is vital you tell us if you later cannot attend)
- Each WI is responsible for confirming the entries brought to the Show by ticking the Entry List and striking out non arrivals.
- Entry numbers should be attached before coming to the Show and Entry Lists left with the Entry Secretary. No Lists = No points!
- Prize giving will be at 4pm & entries can only be collected after prize giving. Entry Lists may be collected from the Entry Secretary from 3.30pm.

**Any queries please contact Helen Dennis Entry Secretary on 07974 768368 or by email above**



# GWYN JONES

- Proud supplier of executive coach and mini bus hire to the WI throughout South Wales, we are a professional, family-run company established in 1921
- Minibuses and coaches to hire 16 to 81 seats

**Phone now for a free quotation  
or go to our website**

 **01656 720300**

Whitecroft Garage Bryncethin  
Bridgend CF32 9YR  
[www.gwynjonescoaches.co.uk](http://www.gwynjonescoaches.co.uk)  
email:  
[admin@gwynjonescoaches.wales](mailto:admin@gwynjonescoaches.wales)





Ladies Fashion &  
Style By

CREAM ✨



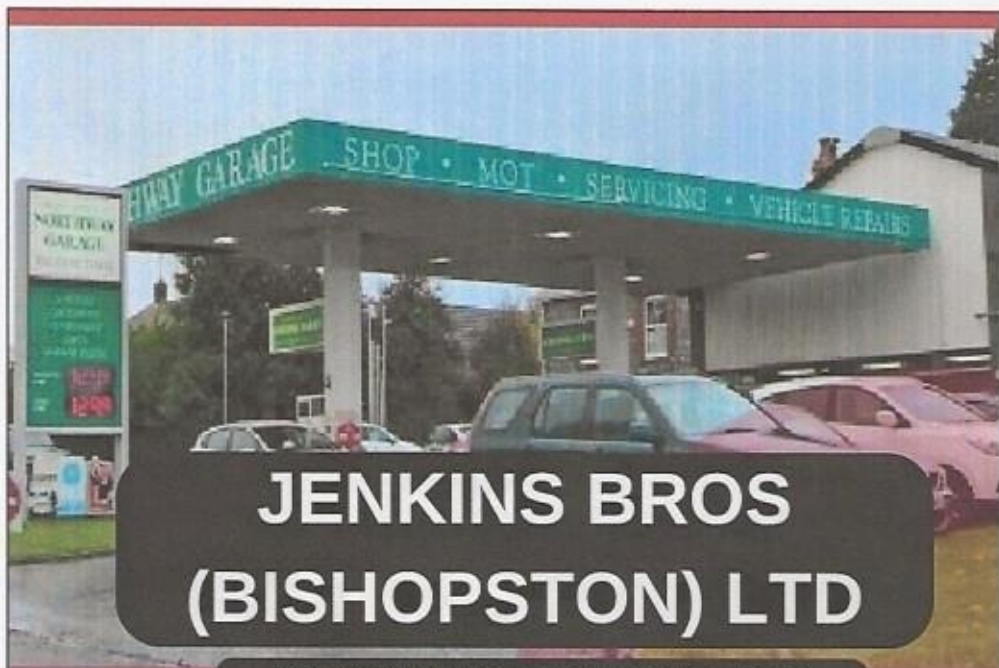
18 Newton Road  
Mumbles Swansea  
SA3 4AU

STOCKIST FOR ALICE COLLINS - FRANSA - MISTRAL

01792 516033  
creamfashionmumbles@gmail.com

Find us on





# JENKINS BROS (BISHOPSTON) LTD

NORTHWAY GARAGE BISHOPSTON  
SWANSEA SA3 3JN



Serving the  
Community since  
1920



Servicing



Vehicle Repairs



Shop



M.O.T.s



24hr Petrol -  
Pay at Pump

[jenkinsbros@outlook.com](mailto:jenkinsbros@outlook.com)

Telephone 01792 232432



# "Nursery Rhymes"

## Glamorgan Federation WI Show Schedule 2025

**Please note: This Schedule contains Class titles that are for interest only and Class entries may or may not reflect these Nursery Rhymes**

*"Once upon a time...."*

### **CLASS 1 Story**

A story which begins with "Once upon a time". Maximum 500 words. To be submitted with your entry form either by email or post no later than the closing date Friday 6<sup>th</sup> June 2025. *Sponsored by Glynhir WI*

*"London Bridge is Falling down"*

### **CLASS 2 Poem**

An Acrostic poem where *the first letter of each line spells the words "LONDON BRIDGE" (only)*. To be submitted with your entry form either by email or post no later than the closing date Friday 6<sup>th</sup> June 2025. (Content of poem can be about anything) *Sponsored by Bont Girls WI*

*"Nursery Rhyme"*

### **CLASS 3 Co-operative**

A nursery rhyme of your choice. 1 Floral exhibit; 2 Craft items; 1 Cooked item; 1 Preserve (this can be a cordial). Staging and presentation to be judged. To be displayed on a board. Maximum table space allowed 22"/56cm deep x 29.5"/75cm wide Height unlimited. No more than two members to stage at the Show. Must be the work of at least three members. *Sponsored by Dinas Powys WI*

*"One a Penny Two a Penny"*

### **CLASS 4 Cookery**

Technical Challenge! Hot Cross Buns – please follow the recipe provided on page 4 of the programme. Three to be entered for judging. *Sponsored by Dunvant WI*

***"Hansel & Gretel"***

**CLASS 5 Cookery**

Two Gingerbread biscuits decorated as Hansel and Gretel.  
No size restriction. *Sponsored by Swansea Central WI*



***"Old Mother Hubbard"***

**CLASS 6 Cookery**

Any sweet or savoury item using all or some of the following store cupboard ingredients:

Flour (any type)

Sugar (any type)

Eggs, Butter or Margarine

Dried herbs or spices

Plus **JUST ONE OTHER INGREDIENT**. Provide recipe card with your entry. *Sponsored by Caroline Davies*

***"Cobbler Cobbler Mend My Shoe"***

**CLASS 7 Cookery**

A Fruit Cobbler (any fruit) in a dish no larger than 8"/20cm.

*Sponsored by Pam Dinham*

***"Oranges & Lemons"***

**CLASS 8 Preserve**

A jar of orange, lemon or a mixture of both marmalade. One entry per Member. *Sponsored by Myra Thomas & Margaret Maguire*

***"Yellow Yellow Daffodil Dancing in the Sun"***

**CLASS 9 Sugar Craft**

A celebration cake topper including a daffodil or daffodils for a 10"/25cm cake (a cake does not need to be entered)

*Sponsored by Tycoch & Sketty WI*

***"I'm a Little Teapot"***

**CLASS 10 Craft**

A Tea Cosy any medium. Any colour/s. No teapot required.

*Sponsored by Angela Smith*





### ***“Little Boy Blue”***

#### **CLASS 11 Craft**

An item of craft predominantly shades of blue (there are 225 different shades to choose from!).

*Sponsored by Three Crosses WI*

### ***“Wee Willie Winkie”***

#### **CLASS 12 Craft**

An item made from an old nightdress or pyjamas.

Photo to be provided of the original garment.

*Sponsored by Glam Girls WI*



### ***“If All the World Were Paper”***

#### **CLASS 13 Craft**

Any item made from paper. No cards.

*Sponsored by Pontypridd WI*

### ***“There Was Old Woman Who Lived in a Shoe”***

#### **CLASS 14**

A knitted or crochet item for a child aged between 2-6 years. No shawls or blankets. Please indicate on the entry form if you wish your item to be donated to a Baby Bank or Women’s Refuge.

Further details in the Show programme page 16.

*Sponsored by Upper Killay WI.*

### **Don’t Forget!**

**For further details of Entry requirements please refer to “On with the Show” WI Handbook—available online (below) or ask Show Cte**

**<https://mywi.thewi.org.uk/interests/shows-and-competitions/on-with-the-show>**

***"There Was an Old Lady Who Swallowed a Fly"***

**CLASS 15 Craft**

A craft item made from any form of felting technique, of a creature included in this nursery rhyme. *Sponsored by Birchgrove Swansea WI*

***"Round & Round the Garden"***

**CLASS 16 Craft**

A Fairy Garden. Any Medium (may contain natural and/or artificial material) Maximum 9" x 9" (23cms) Height unlimited. *Sponsored by Gorseinon WI*



***"One Potato, Two Potato"***

**CLASS 17 Co-operative**

A basket or trug of 6 different items of home-grown fruit and/or vegetables. Presentation and items to be judged. Must be the work of at least two members. *Sponsored by Carnegie Girls WI*

***"Mary, Mary, Quite Contrary"***

**CLASS 18**

Three homegrown specimen flowers of the same variety.

To be brought to the Show in a vase (no valuable or fragile vases please). No other materials or oasis to be included. A photograph of the flowers on the plant to be included and a label saying variety.

*Sponsored by Murton WI*





### ***“Old Macdonald Had a Farm”***

#### **CLASS 19 Floral**

A semi-imposed floral class. This means the Show will provide some components and the competitor is permitted to add further natural or artificial plant material, flowers, foliage, etc plus accessories to help depict the interpretation. To be judged & viewed from front. Maximum size 18"/46cms deep, 18"/46cms wide.

The Show will provide a container, floral foam (if required), a small bunch of Wheat, 3 Sunflowers and some foliage.

Don't forget your scissors/secateurs and anything you may need, to be brought to the staging area on Friday 4th July. Exhibitors may use all or some of the components provided. All exhibitors must commence at the time specified in the schedule and notify the Show Committee if you are unable to attend. *Sponsored by Miskin & Mwyndy WI*

### ***“Twinkle Twinkle Little Star”***

#### **CLASS 20 Floral**



A novice class for members who have not won a first prize in any floral class at the Glamorgan Show since 2022. A floral exhibit incorporating a star/stars. Additional material including fresh, dried, preserved or artificial may be used. Space allowed 18"/46cms deep, 18"/46cms wide, height unlimited. To be viewed and judged from the front. To be brought ready assembled. *Sponsored by Margam WI*

### ***“One Two Buckle My Shoe”***

#### **CLASS 21 Floral**

A floral exhibit incorporating a shoe or boot. Fresh, dried, preserved or artificial plant material may be incorporated. Maximum size 12" x 12" (30cms) Height unlimited. To be viewed and judged from the front. To be brought ready assembled.

*Sponsored by Bont Faen WI*

***“The Animals Went in Two by Two”***

**CLASS 22 Photography**

5" x 7" Photograph of any animal/animals.  
This may be a pet, farm animal, wild animal  
etc. No frames. No mount.

*Sponsored by Barry WI*



***“The North Wind Doth Blow”***

**CLASS 23 Art**

A winter scene. Any medium e.g. watercolour, sketch.oil, gouache,  
pastel. A3 maximum. No frames. *Sponsored by Laleston WI*

***“I Had a Little Nut Tree”***

**CLASS 24 Men's/Partner's Class**

An item made predominantly from old nuts, bolts  
and other metal bits lurking in the shed!

*Sponsored by Penclawdd WI*



*Special thanks to our kind sponsors & benefactors  
your support is very much appreciated*



**Class 14 - A knitted or crochet item for a child**

Baby Banks & Women's Refuges have set up across  
the UK to help families in need. Your entry item will  
be judged in the usual format but if you so wish, mark  
on your entry and we will donate to various Baby  
Banks and Refuges within the Federation area.



# Glamorgan WI Show 2025

## ENTRY FORM

W.I.....

Address: .....

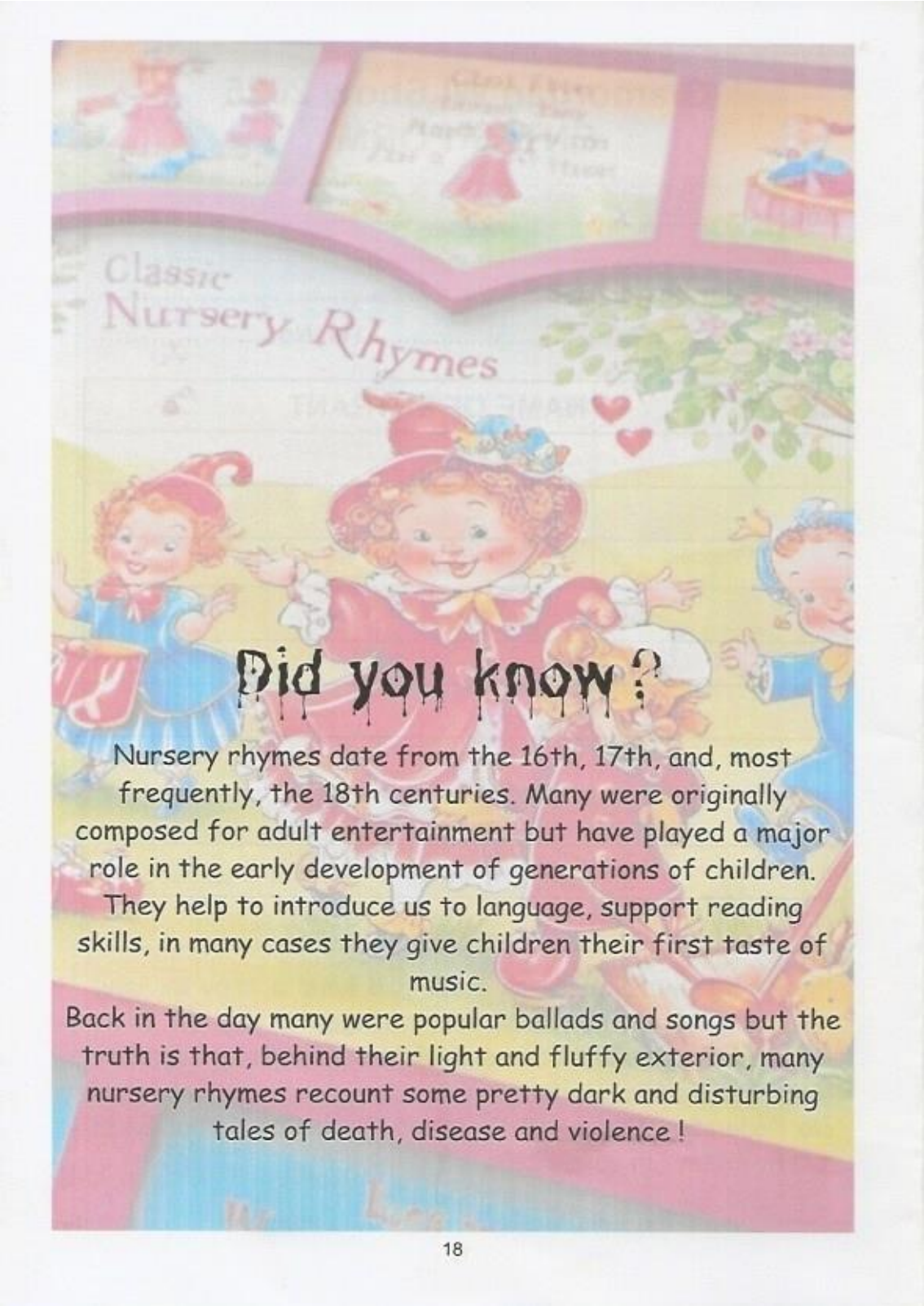
.....

Show Coordinator: .....

Email: .....Tel. No.....

CLASS	NAME OF ENTRANT

Please list entries in Class order and keep a copy for your reference. All entries will be acknowledged to your WI Show Coordinator. All entry forms should be sent to Entry Secretary Helen Dennis Email [helen.denniswi@outlook.com](mailto:helen.denniswi@outlook.com) or by post c/o Federation House, 13 Courtland Place Port Talbot SA13 1JJ by Friday 6th June 2025



## Classic Nursery Rhymes

### Did you know?

Nursery rhymes date from the 16th, 17th, and, most frequently, the 18th centuries. Many were originally composed for adult entertainment but have played a major role in the early development of generations of children.

They help to introduce us to language, support reading skills, in many cases they give children their first taste of music.

Back in the day many were popular ballads and songs but the truth is that, behind their light and fluffy exterior, many nursery rhymes recount some pretty dark and disturbing tales of death, disease and violence!



# marneonsignsltd

*"For all your sign requirements"*

**01792 646949**

info@marneonsigns.com

www.marneonsigns.com



## Afan Carpets Ltd

*Flooring Specialists*

*Top Quality Carpets  
Supplied & Fitted*

75 Station Road

Port Talbot

SA13 1NW

Tel: 01639 882950

enquiries@afancarpetsltd.co.uk

greatdays

HOLIDAYS

[www.greatdays.co.uk](http://www.greatdays.co.uk)

Discover the world  
with Greatdays Holidays  
- the UK's leading  
Group Travel Specialist

We have been putting tailor-made tours together for private groups since 1985.

Whether you have a group wishing to stay within the UK, travel to Europe or venture further afield and not looking for a typical 'off the peg' package, we are here to help.

- Award Winning - Group Travel Award winners and finalists.
- Secure - ABTA (Y0380) bonded and ATOL (4279) protected, and with £5 million of liability cover for your peace of mind.
- Choice - A fascinating range of tour suggestions to choose from.
- Exclusive - We offer a selection of events exclusive to us.
- Our much loved Christmas Show lunches for groups at various UK locations (2024 will be a Motown theme).
- Flexible - Ready to adapt to your groups requirements.
- Strength - A team of group travel specialists working together, delivering excellence.
- Support - 24 hour emergency contact number supplied on all tours.
- Heritage - Family owned trusted business since 1985.



Contact your dedicated Account Manager Dawn Bennison

0161 928 3242 | 07825 298733 | [dawn.bennison@greatdays.co.uk](mailto:dawn.bennison@greatdays.co.uk)

A typical minimum group size for the UK & Ireland is 20, Europe is 25, paying passengers.



ABTA  
Travel with confidence



# WHITE **GECKO** CRAFTLOUNGE

- FABRIC, YARN,  
HABERDASHERY
- WORKSHOPS &  
QUILT RETREATS
- FREE ONLINE  
TUTORIALS

13 CAMMS CORNER  
DINAS POWYS  
CF64 4QY

029 2115 2628

[shop@whitegeckoevents.co.uk](mailto:shop@whitegeckoevents.co.uk)  
[www.whitegeckocraftlounge.co.uk](http://www.whitegeckocraftlounge.co.uk)



*Procrastinating*

The Art of making cute crafty  
things instead of doing what  
you should be doing!



# NANT DDU SPA

RELAX · RECHARGE · RENEW



Set amidst the beauty of the Bannau Brycheiniog National Park, the Nant Ddu Lodge Spa offers an oasis of tranquility for all guests.

Choose from cleansing facials and wraps to unwinding massages and indulgent beauty treatments.

Whether you visit for a treatment, a spa break or decide to become a member of the health spa, you will find it friendly, inviting and relaxing.

Enjoy our 18 metre indoor swimming pool before your treatment. Our fully qualified therapists are on hand to ease away the stresses of daily life. Why not make a day of it and enjoy a meal in our Lodge restaurant?

Book your appointment online, or feel free to call us on

**01685 379111**

[spa@nant-ddu-lodge.co.uk](mailto:spa@nant-ddu-lodge.co.uk)

**Nant Ddu Lodge & Spa  
Cwm Taf, Powys CF48 2HY**





## CELEBRATE THE SEASONS CEGIN GARETH LIFE STYLE DAY

### *Cookery School Lampeter*

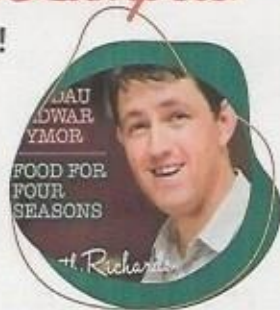
**A Feast of Food, Flowers & Laughter!**

Suitable for groups, family & friends.

Come and celebrate the Seasons at  
"Cegin Gareth" / "Gareth's Kitchen"

#### **Your day will include:**

- ✓ Arrival 10.30 for Coffee & biscuits
- ✓ 11am to 1pm Cookery demonstration
- ✓ 1pm to 2.15pm Three Course Lunch
- ✓ 2.15pm to 4pm Flower arranging demo
- ✓ 4pm to 5pm Afternoon Tea



Per Person\*

**£35**

\*price correct at Jan 2024

For more details contact 01570 422313

email: [garethcegingareth@gmail.com](mailto:garethcegingareth@gmail.com)



THE NEW  
GOWER  
HOTEL

Nestled in the stunning Bishopston valley (Swansea), The New Gower Hotel is the perfect space in which to relax, unwind and escape the stresses of modern life.



Our excellent location affords guests the luxury of being able to easily access the breathtaking beaches and rugged coastline of the Gower peninsula, as well as Swansea city centre and the quaint seaside village of Mumbles.



Restaurant open daily  
Monday to Friday from 5pm



Scan QR code to  
view our menus



Bar opens midday to 11pm  
Monday to Sunday



Function room  
available for funeral  
wakes, baby showers,  
birthday, weddings,  
christenings and  
parties



11 Church Lane, Bishopston, Swansea. SA3 3JT



01792 234111



info@thenewgowerhotel.wales

[www.thenewgowerhotel.wales](http://www.thenewgowerhotel.wales)

**EXCLUSIVE OFFER for WI Members - 15 % Off\***

\*T&Cs apply. Present this voucher to receive 15% off all food, drink and accommodation. Voucher can be used multiple times. Cannot be used in conjunction with any other offer, package or event. Valid throughout 2025. No cash value. Quote code WI2025 when booking via phone to receive your discount or show your voucher to your server.